

SULFUR DIOXIDE AND VOLATILE ORGANIC COMPOUND EXPOSURE TO A COMMUNITY IN TEXAS CITY, TEXAS EVALUATED USING AERMOD AND EMPIRICAL MONITORING DATA

Joyce A. Chen, Andrew R. Zapata, Anders J. Sutherland, David R. Molmen, Brittany S. Chow, Lauren E. Wu, Paul E. Rosenfeld and Rob C. Hesse

Soil Water Air Protection Enterprise, 1640 5th Street, Suite 204, Santa Monica, CA 90401, USA

Received 2012-08-29, Revised 2012-09-04; Accepted 2013-1-1

ABSTRACT

According to emissions data reported to the United States Environmental Protection Agency (USEPA) and the Texas Commission on Environmental Quality (TCEQ), the BP Products North America Inc. (BP) Texas City Refinery is the worst polluter of all the industries in Texas City and is one of the worst polluting refineries in the country. The facility has reported releasing substantial emissions of Sulfur Dioxide (SO₂) and Volatile Organic Compounds (VOCs). Air dispersion modeling of the emissions from the facility can be used to assess contamination in the community surrounding the BP Texas City Refinery. In the present study, air dispersion modeling of SO₂ and VOCs was performed using AERMOD, the EPA-preferred regulatory dispersion model, to determine the impact of BP's contribution to local air pollution on residents of Texas City and La Marque. SO₂ emissions reported to be released by the facility were modeled using AERMOD and it was determined that geographical locations inside this plume experienced ambient air concentrations of SO₂ meeting or exceeding 50 micrograms per cubic meter ($\mu\text{g}/\text{m}^3$) in 2009 and 2010. Data collected by six active SO₂ air monitors located in Texas City support the air dispersion modeling results. Additional modeling was conducted for VOCs emitted by the facility in 2010. The AERMOD analysis of SO₂ concentrations in and around the BP facility produced results consistent with data collected by the air monitoring network in Texas City. This confirms the accuracy of AERMOD's estimations and its reliability as an emissions modeling tool. VOC concentrations available for analysis from the air monitoring network in Texas City are extremely limited in terms of the quantity of VOCs sampled for. This evidence affirms the ability of AERMOD to demonstrate comprehensive contaminant impacts that surpass the ability of the current air monitoring network.

Keywords: AMS/EPA Regulatory Model, AERMOD, Air Monitoring, BP, Emissions, Refinery

1. INTRODUCTION

The BP Products North America Inc. (BP) Texas City Refinery is an oil refinery that has been in operation since 1998. The surrounding communities of Texas City and La Marque are located primarily to the west, northwest, north and northeast of the BP facility. The geographic location of Texas City near Galveston Bay,

with its high precipitation and humidity, is conducive to the acceleration of chemical processes in the atmosphere.

Texas City is also located in a county with non-attainment status for ozone.

The BP Texas City Refinery emits large quantities of atmospheric pollutants and has an extensive history of poor operational performance, including upsets, excessive emissions events, violations and accidents. The

Corresponding Author: Andrew R. Zapata, Soil Water Air Protection Enterprise, 1640 5th Street, Suite 204, Santa Monica, CA 90401, USA

BP Texas City Refinery is the largest polluter in the Texas City area and emits large quantities of Criteria Air Pollutants (CAPs) and Hazardous Air Pollutants (HAPs), including, but not limited to Sulfur Dioxide (SO₂), Volatile Organic Compounds (VOCs), Nitrogen Oxides (NO_x) and Particulate Matter (PM). Compared to other industries in Galveston County, the BP Refinery releases atmospheric pollutants in amounts many times greater than other facilities. **Figure 1-4** depict BP's contributions to SO₂ and VOC pollution in Galveston County. The BP Texas City Refinery contributes a significant portion of SO₂ and VOC emissions in Galveston County in 2009 and 2010. Based on total air emissions reported to the United States Environmental Protection Agency (USEPA) Toxics Release Inventory (TRI), the BP Texas City Refinery reported more total toxic air emissions than any other refinery in 2009 and 2010 combined. Furthermore, the BP Texas City Refinery reported releasing more toxic air emissions per barrel of crude oil processed than the top ten largest refineries in the United States. A comparison of United

States refineries, including BP Texas City, can be seen in **Table 1**.

Sulfur Dioxide produces a variety of adverse respiratory effects, according to multiple authoritative agencies, including bronchoconstriction (narrowing of the airways leading to difficulty breathing), increased asthma symptoms and hospital admissions for respiratory illnesses (USEPA, 2009). The Agency for Toxic Substances and Disease Registry (ATSDR) also states that SO₂ pollution is associated with respiratory symptoms and reduced breathing ability. Children who breathe SO₂ pollution may develop more breathing problems and respiratory illnesses as they get older and may make more emergency room visits for respiratory illness (ATSDR, 1998). Respiratory effects in humans from SO₂ have been demonstrated at ambient levels as low as 9 µg m⁻³ (3.46 ppb), averaged over several years (Fung *et al.*, 2006) and 11 µg m⁻³ (4.27 ppb) averaged over 24 h (Chiu *et al.*, 2009).

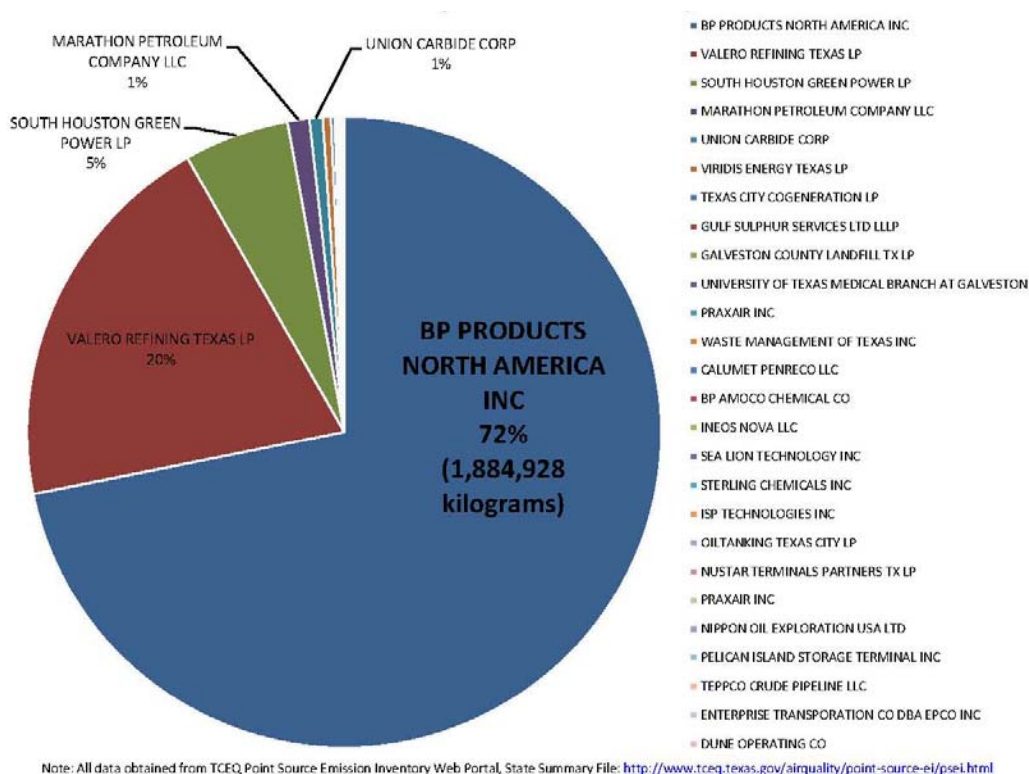


Fig. 1. Sulfur dioxide releases reported to the 2009 TCEQ emissions inventory in Galveston County

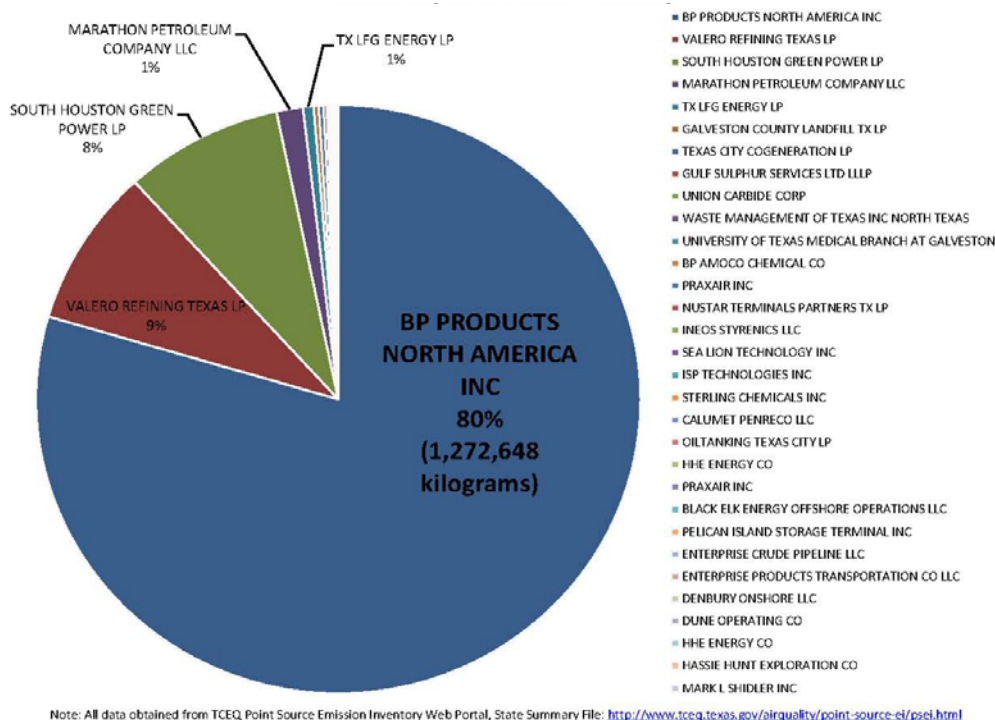


Fig. 2. Sulfur dioxide releases reported to the 2010 TCEQ emissions inventory in Galveston County

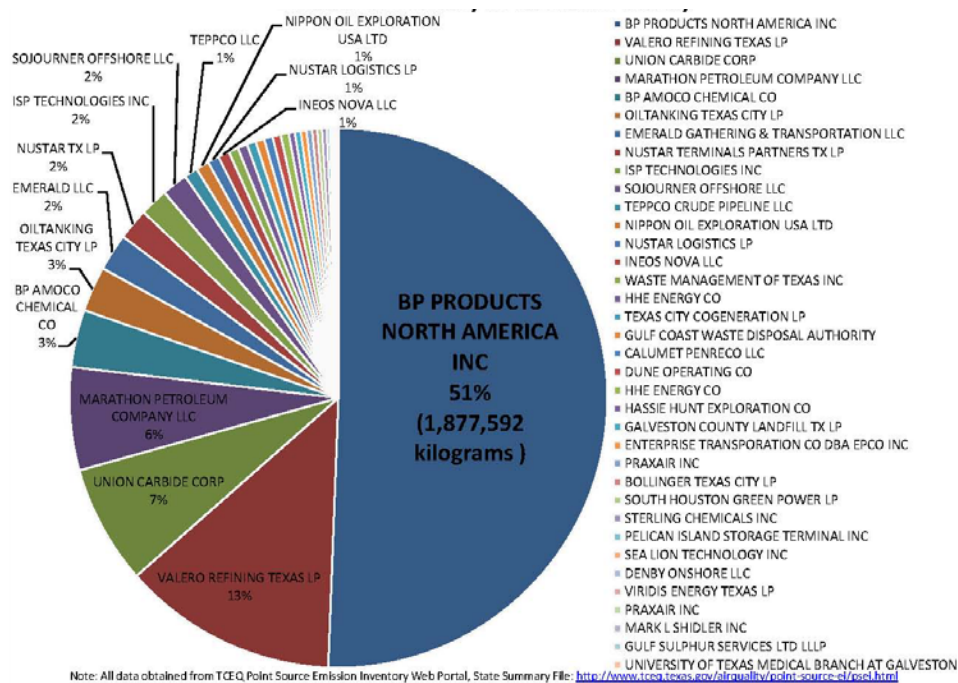


Fig. 3. Volatile organic compound releases reported to the 2009 TCEQ emissions inventory in Galveston County

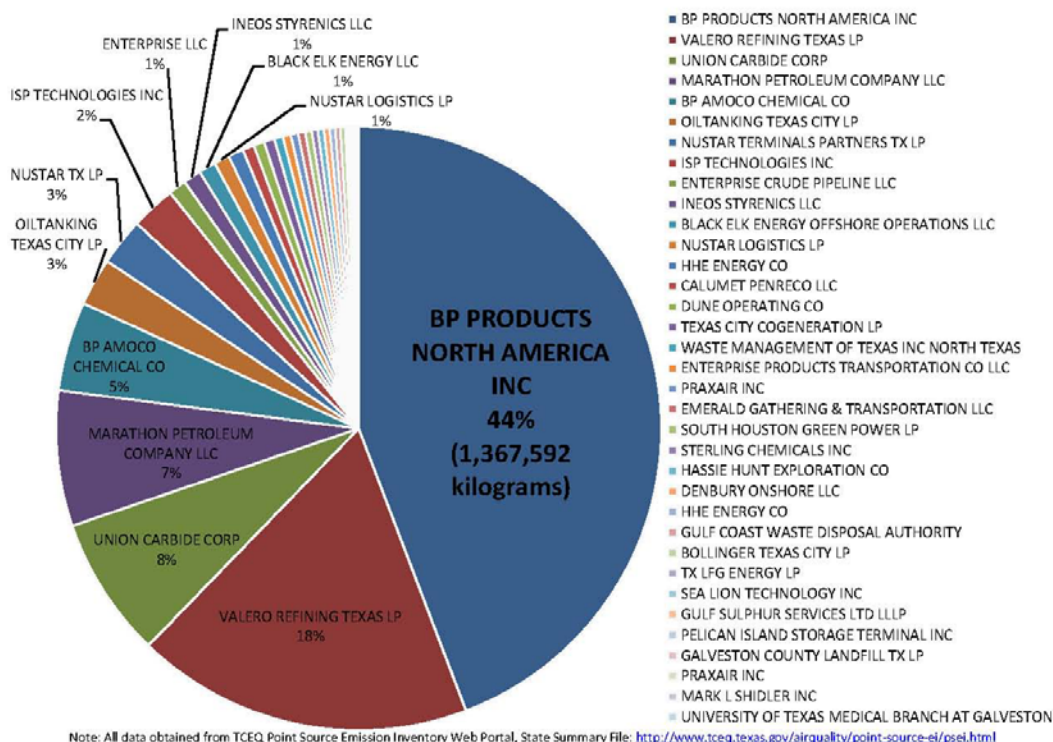


Fig. 4. Volatile organic compound releases reported to the 2010 TCEQ emissions inventory in Galveston County

Table 1. Operable capacity and reported toxic air emissions at the largest refineries in the United States

Rank	Corporation	Company name	State	Site	Total operable capacity ^A (Barrels per calendar day)	2009 toxic air Emissions ^B (Pounds)	2010 toxic air emissions ^B (Pounds)	(Pounds) Combined 2009-2010 toxic air emissions	Ratio of air emissions to operable capacity
1	Exxon Mobil Corp.	ExxonMobil refining and supply Co.	TX	Baytown	560,640	1,089,687	1,376,343	2,466,030	4.4
2	Exxon Mobil Corp.	Exxonmobil refining and supply Co.	LA	Baton rouge	504,500	1,261,817	1,113,013	2,374,831	4.7
3	Hovensa LLC	Hovensa LLC	VI	Kingshill	500,000	453,838	482,452	936,291	1.9
4	BP PLC	BP Products North America Inc.,	TX	Texas city	437,080	1,256,740	1,258,597	2,515,337	5.8
5	Marathon Oil Corp.	Marathon petroleum Co LLC	LA	Garyville	436,000	223,152	340,332	563,485	1.3
6	PDV America Inc.	Citgo Petroleum Corp.	LA	Lake charles	429,500	913,958	571,637	1,485,595	3.5
7	BP PLC	BP Products	IN	Whiting	405,000	702,541	683,765	1,386,306	3.4
8	WRB Refining LLC	WRB Refining LLC North America Inc.,	IL	Wood river	362,000	604,234	519,955	1,124,188	3.1
9	Exxon Mobil Corp.	Exxon mobil refining and supply Co.	TX	Beaumont	344,500	792,291	815,287	1,607,579	4.7
10	Sunoco Inc.	Sunoco Inc (R and M)	PA	Philadelphia	335,000	535,803	600,329	1,136,132	3.4

^A, Refinery capacity data obtained from U.S. Energy Information Administration 2010 Refinery Capacity Report. Accessed online at <http://www.eia.gov/petroleum/refinerycapacity/archive/2010/refcap2010.html>

^B, Air emissions data obtained from U.S. Environmental Protection Agency Toxics Release Inventory for 2009 and 2010. Emissions data include total point and fugitive source air releases from facilities. Accessed online at http://iaspub.epa.gov/triexplorer/tri_release.facility

Volatile Organic Compounds are also known to be harmful to human health (USEPA, 2010). Adverse

respiratory effects resulting from VOC exposure include respiratory tract irritation and discomfort, dyspnea (debilitating shortness of breath) and epistaxis (nasal hemorrhage) (USEPA, 2012). Human studies demonstrate an association between VOC exposure and respiratory effects such as bronchitis, asthma and asthma-like symptoms, airway inflammation, general bronchial irritation and other chronic respiratory symptoms (Ware *et al.*, 1993; Wieslander *et al.*, 1997). Furthermore, when VOCs and NO_x interact in the atmosphere in the presence of sunlight, they react to produce ozone, which causes serious respiratory problems (USEPA, 2010). VOCs released in large quantities by petroleum refineries such as the BP Texas City Refinery include, but are not limited to, Benzene, Toluene, Ethylbenzene, Xylene (BTEX) compounds that produce adverse effects in the respiratory system.

Schools evaluated within a one-mile radius of the facility in a 2009 USA Today study were found to be ranked among the worst schools for air quality in the United States. These schools were consistently in the first, second, or third percentile for schools with the worst air quality in the United States. At these schools, sulfuric acid and polycyclic aromatic hydrocarbons were the first and second most prevalent chemicals, responsible for roughly 40% and 30% of the toxicity respectively. Furthermore, the BP Texas City Refinery is listed as the primary polluter for eight schools in the first, second, or third percentile for schools with the worst air quality in the United States.

2. MATERIALS AND METHODS

Air dispersion modeling was performed using AERMOD, the USEPA preferred regulatory dispersion model, to estimate ambient air concentrations of SO₂ and VOC concentrations in the surrounding community. AERMOD is a computer-based modeling system designed for short-range (up to 50 km) dispersion of air pollutant emissions from stationary steady-state industrial sources developed by the American Meteorological Society/EPA Regulatory Model Improvement Committee. Meteorological and topographical data specific to the modeled area were input to AERMOD.

Pre-processed meteorological data specifically for the AERMOD system was obtained directly from Trinity Consultants. For this analysis, 2009 and 2010 surface data from Scholes Field in Galveston, Texas and upper air data from Lake Charles, Louisiana were used. Geospatial data used in the dispersion modeling analysis

included sixteen United States Geological Survey Digital Elevation Models (DEMs). DEM data of the 7.5 min quadrangles covering the modeled area were obtained from MapMart Global Mapping Solutions.

Ground level receptors were defined using nested Cartesian receptor grids. Fine grids containing 500 m spacing were placed across the property line and extended approximately four to 5 km into the adjacent community. Coarse grids were overlain containing 1000 m spacing and extended approximately 15 km into the community. Receptors and geospatial data were compiled within the AERMAP preprocessor to obtain terrain elevations at receptor locations.

2009 and 2010 Annual Emissions Inventory (EI) data reported to Texas Commission on Environmental Quality (TCEQ) by BP were compiled and used for the modeling analysis. Data were obtained directly from the TCEQ Emissions Assessment Section. The EI contains unit-specific data such as stack diameter, stack height, exit stack gas temperature and exit stack gas velocity. Site-wide emissions for the Texas City Refinery can be quantified from these reported data to provide a baseline estimate of emissions into the community, assuming constant emissions rates and lack of interaction between pollutants. Modeling was performed to estimate SO₂ and VOC emissions from site-wide processes at the refinery in 2009 and 2010.

To streamline the air modeling analysis, only emissions sources from the 2009 and 2010 EI's that were reported to emit greater than or equal to one ton of chemicals were compiled. Emissions sources that emitted greater than or equal to one ton of chemicals have been determined to account for the vast majority of emissions at the BP facility. The emissions data were joined with stack, flare and fugitive parameter data tables received from the TCEQ Emissions Assessment Section.

To verify source locations reported to the EI in the parameter data tables, they were plotted in ArcGIS with some manual corrections. Sources were relocated based on plot plans of the BP Refinery and Docks facilities received from TCEQ and aerial imagery. Sources that were not able to be accurately located were modeled at the center of the refinery. Verification of source locations allowed for a more accurate depiction of site-wide emissions from the facility.

Some emissions sources were missing parameters, such as stack height or velocity, in the 2009 and 2010 EI stack, flare and fugitive parameter data tables received from TCEQ. These emissions sources were assigned parameters based on data obtained from BP or from a similar unit. Emissions sources lacking unit-specific

data were assigned nominal values.

AERMOD was used to model the 1 h concentrations of SO₂ and VOCs based on releases reported at the BP facility in 2009 and 2010. AERMOD outputs were interpolated using the kriging algorithm in ArcGIS.

Results of air dispersion modeling of 1 h concentrations of SO₂ and VOCs were then analyzed with corresponding air monitoring data. The air monitoring data was obtained through TCEQ and other agencies that operate a network of ambient air quality monitoring stations in the Texas City area. Compounds sampled for at air monitoring locations include NO_x, Ozone and SO₂. VOCs are monitored for through the use of 24 h SUMMA canister samples taken every six days at multiple air monitoring locations. Hourly VOC air monitoring data is only available for four compounds: Benzene, Toluene, Pentane and Hexane. These hourly samples are collected at three air monitoring locations: The Texas City Logan and 31st Street air monitors and the BP Onsite air monitor. VOC data from the aforementioned locations was only available for 2010 as the air monitoring stations were not active until 2010.

An important factor to note in the ability of air monitoring equipment to accurately and reliably sample for SO₂ is observed through quenching. The USEPA states: “Nonradiative deactivation (quenching) of excited SO₂ molecules can occur from collisions with common molecules in air, including nitrogen, oxygen and water. During collisional quenching, the excited SO₂ molecule transfers energy, kinetically allowing the SO₂ molecule to return to the original lower energy state without emitting a photon. Collisional quenching results in a decrease in the SO₂ fluorescence and, hence, an underestimation of SO₂ concentration in the air sample. Of particular concern is the variable water vapor content of air. Luke (1997) reported that the response of the detector could be reduced by an amount of ~7 to 15% at water vapor mixing ratios of 1 to 1.5 mole percent (Relative Humidity (RH) = 35 to 50% at 20 to 25°C and 1 Atmosphere (ATM) for a modified pulsed fluorescence detector (Thermo Environmental Instruments, Model 43s)” (USEPA, 2008). Meteorological data from 2010 demonstrates that the observed relative humidity throughout Galveston County is consistently greater than 50%. Relative humidity at this level would indicate a reasonable potential for a reduction in detector response for air monitoring equipment that samples for SO₂.

3. RESULTS AND DISCUSSION

Figure 5 is based on emissions of SO₂ from the BP facility in 2009 and 2010 that met or exceeded 50 micrograms per cubic meter ($\mu\text{g}/\text{m}^3$) in ambient air in the Texas City and La Marque communities. **Figure 6** depicts the extent of VOC emissions reported to be released by the BP facility in 2010.

At each geographic location within the SO₂ plume in **Fig. 5**, AERMOD predicted that BP's reported baseline releases were responsible for at least one increase of 50 $\mu\text{g}/\text{m}^3$ in 1 h ambient SO₂ concentrations in 2009 and 2010. The reasoning for using 50 $\mu\text{g}/\text{m}^3$ of SO₂ as the basis for the plume is based on two epidemiological studies demonstrating a statistically significant, more-than-doubled risk for the exposed population against the control population of developing the effect in question (Delfino *et al.*, 2003; Segala *et al.*, 1998). In order to establish this plume, modeled 1 h SO₂ concentration outputs for 2009 and 2010 were analyzed. Sensitive children subjected to these SO₂ levels are expected to suffer asthma attacks or incidents of respiratory distress resulting from BP's hazardous emissions.

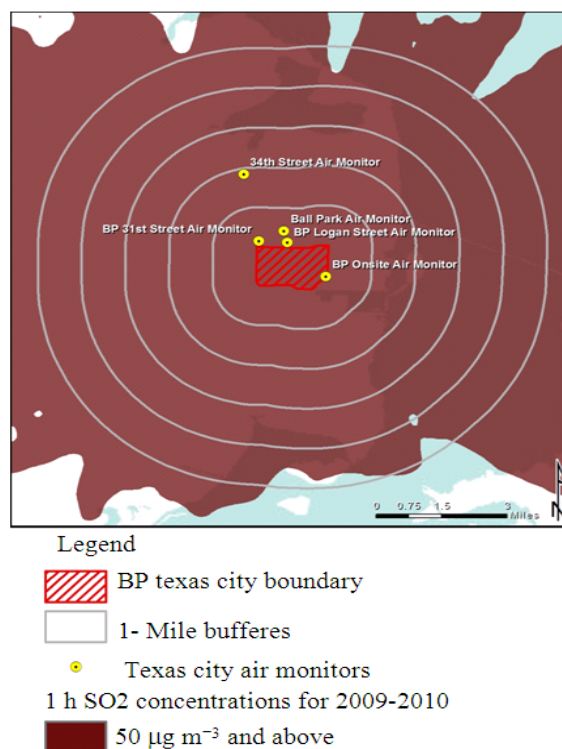


Fig. 5. 2009-2010 1-hour ambient air concentration of SO₂ in Texas City based on BP Texas City emissions

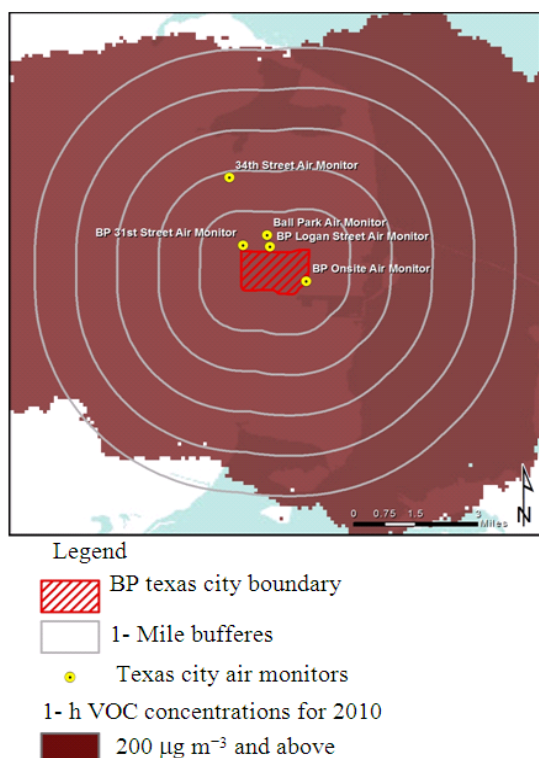


Fig. 6. 2010 1-hour ambient air concentration of VOCs in Texas City based on BP Texas City emissions

A number of published articles have shown that AERMOD is an accurate and reliable modeling system. Using empirical data in a variety of different scenarios, these studies showed that “estimated values agree with the observed concentrations within a factor of two” (Mohan *et al.*, 2011). Moreover, AERMOD has consistently proven to be the most efficient of all the available air modeling systems, as well as produce the least amount of bias. Similarly, this study on BP facility emissions demonstrates the reliability of AERMOD.

Figure 7-11 show the air monitoring data for ozone, SO₂ and VOCs respectively. Ozone has been included because its ambient air concentrations can be correlated to the concentrations of the other pollutants. The closest active ozone monitor to the facility is the Texas City 34th Street Monitor. The levels of ozone recorded by this air monitor have demonstrated exceedances of several regulatory thresholds over consecutive years in 2009 and 2010. Regulatory threshold exceedances for these years include the 1 h National Ambient Air Quality Standards (NAAQS) of 240 $\mu\text{g m}^{-3}$ (120 ppbv), 8 h NAAQS of 150 $\mu\text{g m}^{-3}$ (75 ppbv) and the American Conference of

Governmental Industrial Hygienists (ACGIH) 8 h average Threshold Limit Value of 98.16 $\mu\text{g m}^{-3}$ (50 ppbv). SO₂ concentrations measured by the Texas City Ball Park Monitor and several other air monitors exceeded the TCEQ Effects Screening Level (ESL) of 200 $\mu\text{g m}^{-3}$ (75 ppbv) multiple times in 2009 and 2010. The 50 $\mu\text{g m}^{-3}$ threshold exceedance demonstrated through air dispersion modeling of SO₂ is supported by SO₂ air monitoring data obtained from the aforementioned air monitoring stations, which frequently show exceedances above this threshold. Additionally, VOC concentrations in the form of pentane were detected by one of the Texas City air monitors (Logan Street) at concentrations exceeding 88.53 $\mu\text{g m}^{-3}$ (30 ppbv) several times throughout 2010 (**Fig. 9**). Pentane concentrations for the year 2009 have been unavailable during this analysis and were therefore omitted.

Discrepancies between VOC concentrations demonstrated through air dispersion modeling and individual VOC concentrations observed within the air monitoring network highlights the capability of air dispersion modeling to more thoroughly characterize contaminant levels when the extent of the air monitoring system is inadequate. The air monitoring network currently utilized around the BP Texas City Refinery samples hourly at three locations for only four VOCs: Benzene, toluene, pentane and hexane. Yet these VOCs are not reflective of the quantity of unique VOCs being released from the facility. The air dispersion modeling software takes into account both classified and unclassified VOCs when developing a model for VOC exposure from facility emissions. The level of AERMOD’s comprehensiveness concerning VOC exposure relative to the VOC sampling methods in the Texas City air quality monitoring network further demonstrates the accuracy and reliability of AERMOD as an emissions modeling tool.

It can be seen from the aforementioned figures that the SO₂ AERMOD results are similar to concentrations detected by the air monitors. AERMOD results for VOCs demonstrate that contaminant levels in the community greatly exceed levels observed through air quality monitoring of individual VOCs. The discrepancy between the presumed community impact from VOC emissions shown through air monitoring data and the impact demonstrated through air dispersion modeling raises a unique concern regarding the cumulative impact of multiple VOCs. This concern is not apparent from data obtained through the air quality monitoring network, further demonstrating the accuracy and reliability of air dispersion modeling in evaluating community exposure to harmful contaminants.

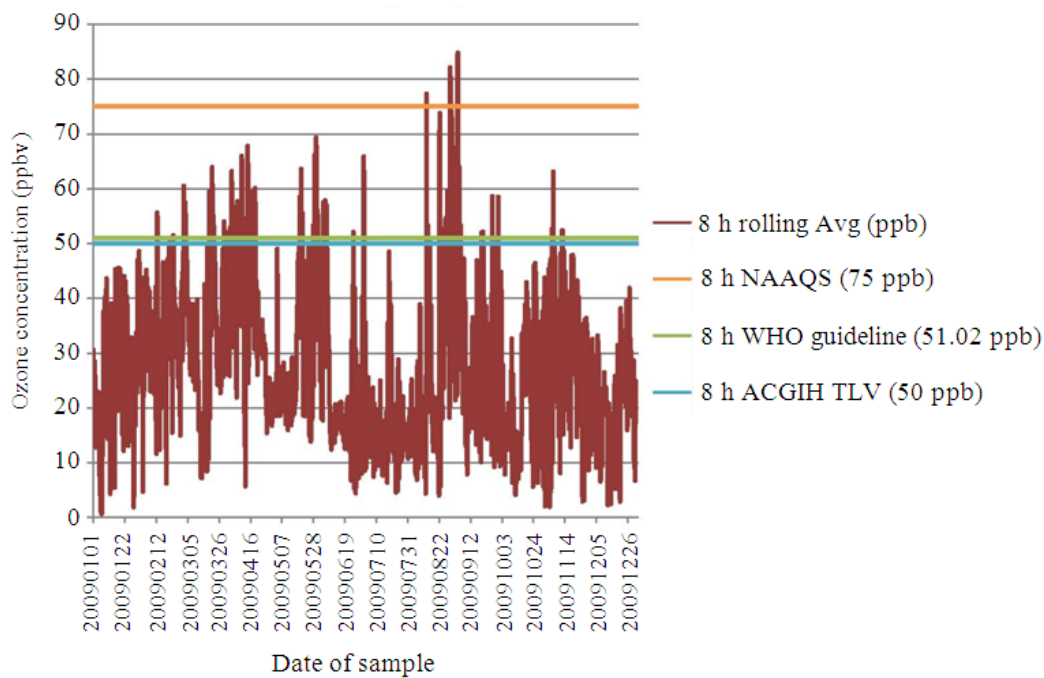


Fig. 7. 2009 Texas City 34th Street air monitoring data for ozone, 8-hour rolling average concentrations

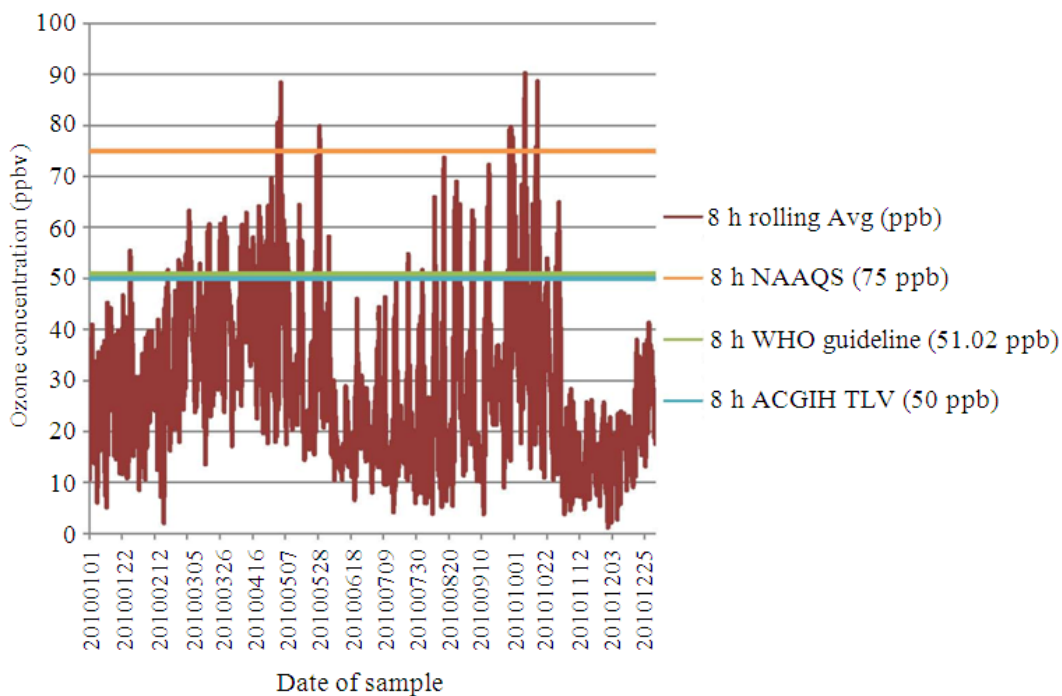


Fig. 8. 2010 Texas City 34th Street air monitoring data for ozone, 8-hour rolling average concentrations

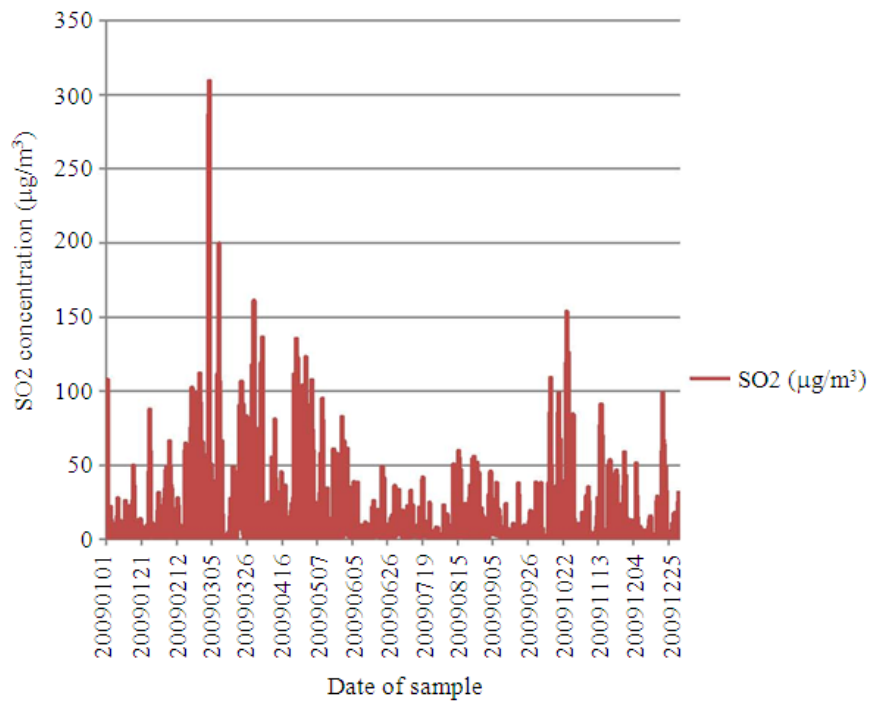


Fig. 9. 2009 Texas City Ball Park air monitoring data for SO2, 1-hour concentrations

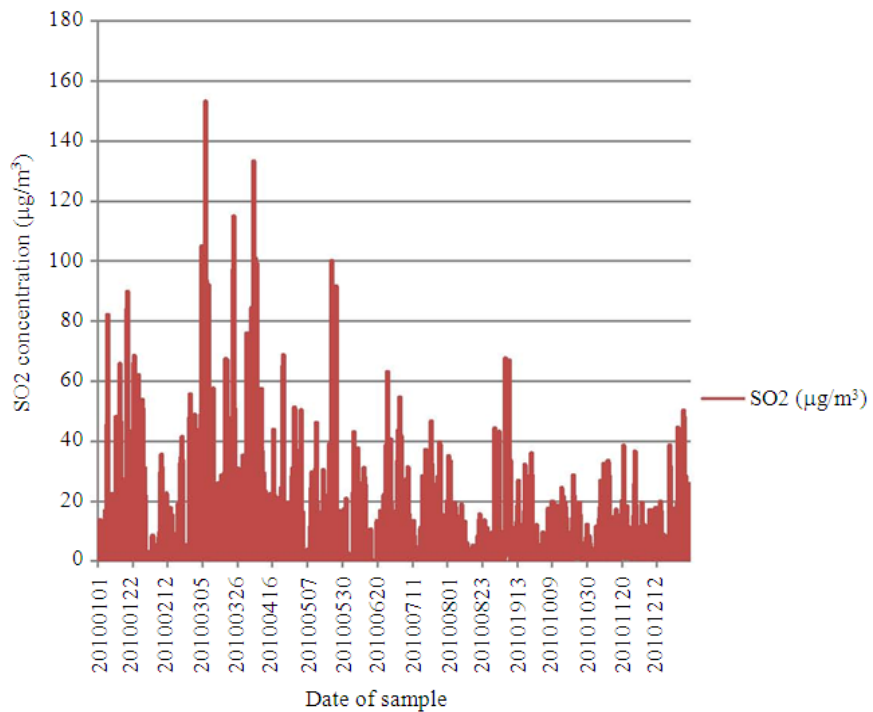


Fig. 10. 2010 Texas City Ball Park air monitoring data for SO2, 1-hour concentrations

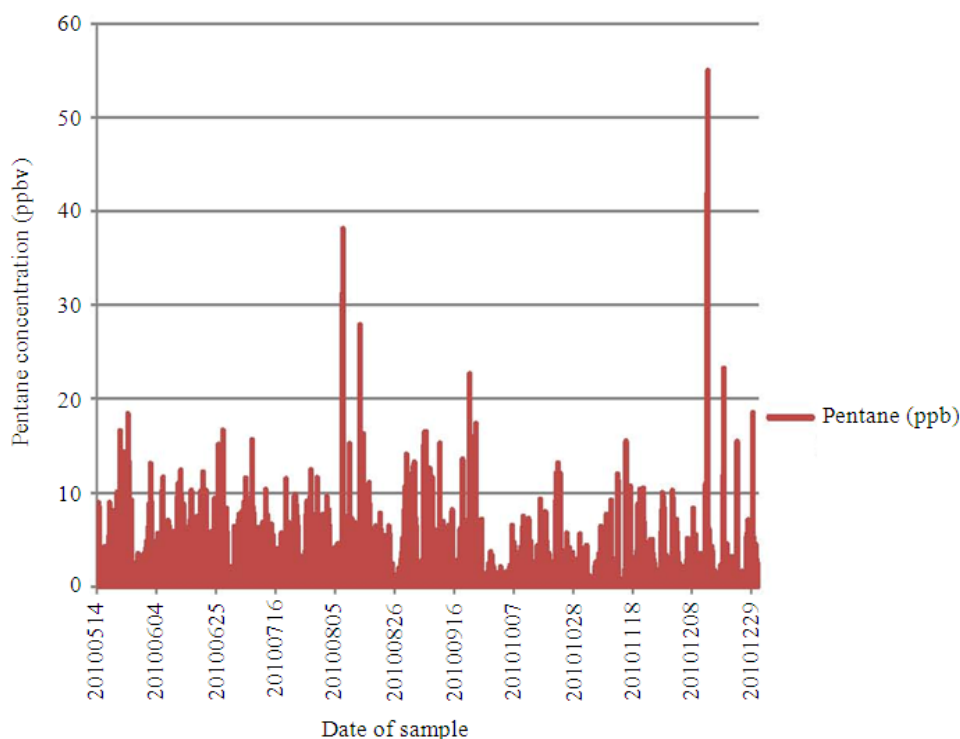


Fig. 11. 2010 Logan Street air monitoring data for Pentane, 1-hour concentrations

4. CONCLUSION

BP Texas City Refinery, as one of the country's worst polluters, has released a variety of pollutants capable of spreading into neighborhoods in the Texas City area. Using AERMOD, the spatial extent of SO₂ and VOC emissions from the BP facility was modeled in order to approximate their location and magnitude. The SO₂ plume was based on 1 h concentrations of sulfur dioxide that reached or exceeded 50 $\mu\text{g m}^{-3}$, a level which two peer-reviewed health studies demonstrated could double the risk of asthma attacks or exacerbation in sensitive children. All spatial locations inside this plume were affected by an incremental increase of 50 $\mu\text{g m}^{-3}$ in 1 h ambient SO₂ concentrations in 2009 and 2010. AERMOD was also used to model the extent of VOCs released from the BP facility. This analysis of SO₂ concentrations in and around the BP facility produced results that correlated with those from the Texas City air monitoring system, thereby validating the usage of the AERMOD model. The comparison of the air dispersion modeling analysis for VOC exposure produced results that exceeded individual VOC detections observed from the air quality monitoring

network, due to the fact that this modeling analysis incorporates a wider array of VOCs that are released from refinery operations than the air monitoring network takes into account.

5. REFERENCES

- ATSDR, 1998. Public health statement for sulfur dioxide. Public Health Service, Atlanta, GA: U.S.
- Chiu, H.F., M.H. Cheng and C.Y. Yang, 2009. Air pollution and hospital admissions for pneumonia in a subtropical city: Taipei, Taiwan. *Inhalation Toxicol.*, 21: 32-37. DOI: 10.1080/08958370802441198
- Delfino, R.J., H. Gong, W.S. Linn, Y. Hu and E.D. Pellizzari, 2003. Respiratory symptoms and peak expiratory flow in children with asthma in relation to volatile organic compounds in exhaled breath and ambient air. *J. Exposure Anal. Environ. Epidemiol.*, 13: 348-363. DOI: 10.1038/sj.jea.7500287
- Fung, K.Y., S. Khan, D. Krewski and Y. Chen, 2006. Association between air pollution and multiple respiratory hospitalizations among the elderly in Vancouver, Canada. *Inhalation Toxicol.*, 18: 1005-1011. DOI: 10.1080/08958370600904538

- Luke, W.T., 1997. Evaluation of a commercial pulsed fluorescence detector for the measurement of low-level SO₂ concentrations during the gas-phase sulfur intercomparison experiment. *J. Geophys. Res.*, 102: 255-265. DOI: 10.1029/96JD03347
- Mohan, M., S. Bhati, A. Screenivas and P. Marrapu, 2011. Performance evaluation of AERMOD and ADMS-urban for total suspended particulate matter concentrations in megacity Delhi. *Aerosol Air Q. Res.*, 11: 883-894. DOI: 10.4209/aaqr.2011.05.0065
- Segala, C., B. Fauroux, J. Just, L. Pascual and A. Grimfeld *et al.*, 1998. Short-term effect of winter air pollution on respiratory health of asthmatic children in Paris. *Eur. Respiratory J.*, 11: 677-685.
- USEPA, 2008. Integrated Science Assessment (ISA) for sulfur oxides-health criteria. United States Environmental Protection Agency.
- USEPA, 2009. Proposed revisions to the ambient air quality standards for sulfur dioxide. United States Environmental Protection Agency.
- USEPA, 2010. Volatile organic compounds emissions. United States Environmental Protection Agency.
- USEPA, 2012. An Introduction to Indoor Air Quality (IAQ) Volatile Organic Compounds (VOCs). United States Environmental Protection Agency.
- Ware, J.H., J.D. Spengler, L.M. Neas, J.M. Samet and G.R. Wagner *et al.*, 1993. Respiratory and irritant health effects of ambient volatile organic compounds. The Kanawha County Health Study. *Am. J. Epidemiol.*, 137: 1287-1301. PMID: 8333411
- Wieslander, G., D. Norback, E. Bjornsson, C. Janson and G. Boman, 1997. Asthma and the indoor environment: The significance of emission of formaldehyde and volatile organic compounds from newly painted indoor surfaces. *Int. Arch. Occupat. Environ. Health*, 69: 115-124. DOI: 10.1007/s004200050125